

Goswell Road

London • • EC1V 0AF
(From) Per Month: £1,850 (From) Per Month



coopers
est 1986

Goswell Road

London • • EC1V 0AF

Large, bright one bedroom flat on the second floor of a purpose built development in popular Clerkenwell.

Situated a short walk from Barbican tube station, the flat comprises: entrance hallway, living room with balcony, separate kitchen, modern bathroom and double bedroom.

Available 14th March

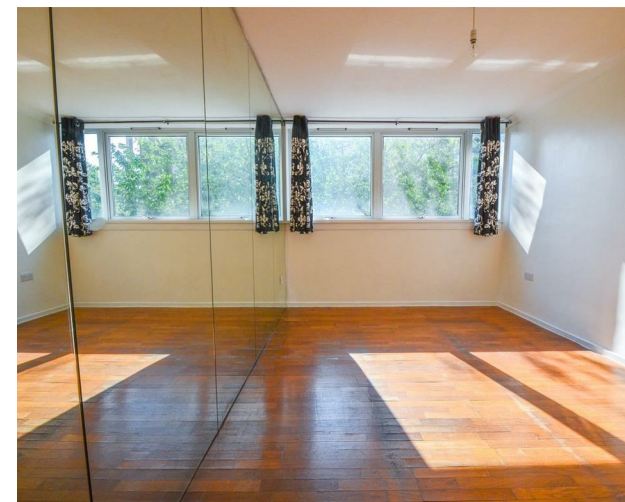
Part Furnished

Large Balcony

Modern Interior

Excellent Transport Links

These particulars are intended as a guide and must not be relied upon as statements of fact. Your attention is drawn to the Important Notice on the last page.







Schools:

Large, bright one bedroom flat on the second floor of a purpose built development in popular Clerkenwell.



Train:



Car:

M4, A40, M25, M40



Council Tax Band:

C

(Distances are straight line measurements from centre of postcode)



coopers
est 1986

0207 580 9658

**22 Cleveland Street, Fitzrovia,
London, W1T 4JB**

info@coopersonlondon.co.uk

CoopersResidential.co.uk

Energy Efficiency Rating		
Very energy efficient - lower running costs	Current	Target
Very energy efficient - lower running costs		
A		
B		
C		
D		
E		
F		
G		
Not energy efficient - higher running costs		
England & Wales		
EPC Guidance 2022/2023		

Important Notice: These particulars, whilst believed to be accurate are set out as a general outline only for guidance and do not constitute any part of an offer or contract. Intending purchasers should not rely on them as statements or representation of fact, but must satisfy themselves by inspection or otherwise has the authority to make or give any representation or warranty in respect of the property.